



GAT MONTHLY MEMBERSHIP PROGRESS REPORT

Results as of: 6/30/2023

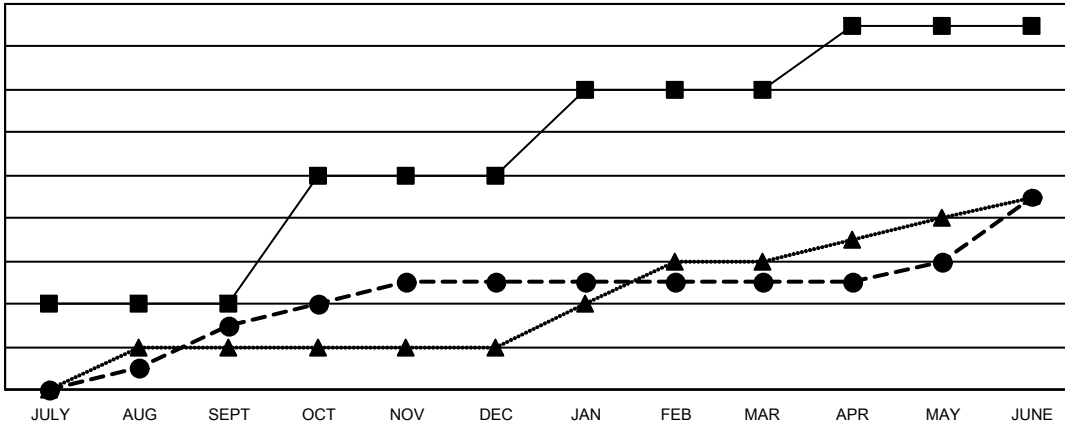
Multiple District 35

LOCATION: FLORIDA

Clubs			
RESULTS FOR 2022-2023			
QUARTER	NEW CLUB GOAL	NEW CLUBS	DROPPED CLUBS
JULY/AUG/SEPT	4	3	3
OCT/NOV/DEC	6	2	7
JAN/FEB/MAR	4	0	4
APR/MAY/JUNE	3	4	9

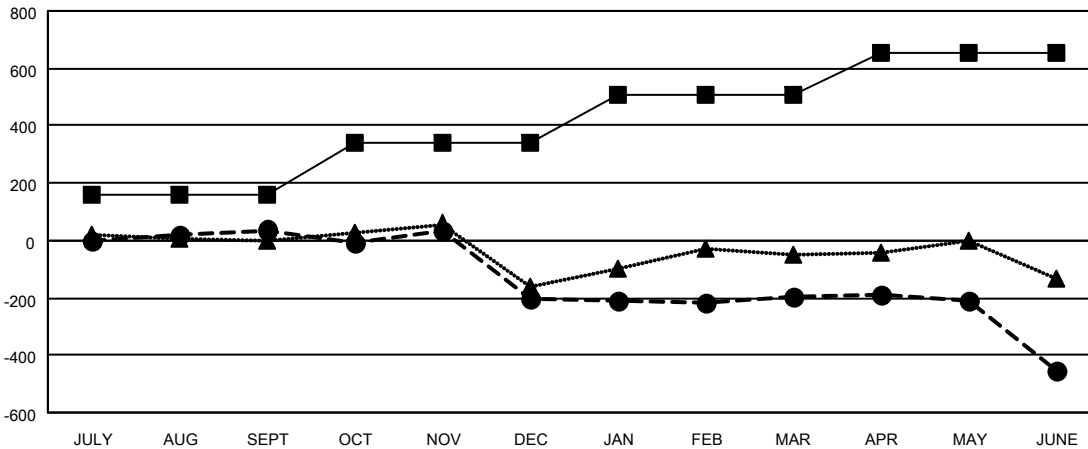
Members			
RESULTS FOR 2022-2023			
QUARTER	MEMBER GROWTH NET GOAL	MEMBER GROWTH ACTUAL	DROPPED MEMBERS ACTUAL (including transfers)
JULY/AUG/SEPT	160	309	221
OCT/NOV/DEC	180	223	443
JAN/FEB/MAR	170	266	203
APR/MAY/JUNE	145	292	510

GOALS AND ACTUAL NEW CLUBS CUMULATIVE



- - CURRENT YEAR GOALS FOR NEW CLUBS
- - CURRENT YEAR ACTUAL NEW CLUBS
- ▲ - LAST YEAR ACTUAL NEW CLUBS

GOALS AND ACTUAL MEMBERS CUMULATIVE



- - MEMBER GROWTH NET GOAL
- - MEMBER GROWTH ACTUAL
- ▲ - LAST YEAR MEMBERSHIP ACTUAL

DROPPED CLUBS: 23	
DROPPED MEMBERS	
DECEASED	85
CLUB CANCELLED	189
OTHER	1,105
TOTAL	1,379

139 CLUBS OF 224 ADDED 1 OR MORE NEW MEMBERS

[CLICK HERE FOR CUMULATIVE MEMBERSHIP DATA](#)

GENDER DISTRIBUTION	
MALE	2,397 (51.65%)
FEMALE	2,241 (48.29%)
NON BINARY	1 (0.02%)
PREFER NOT TO ANSWER	2 (0.04%)
TOTAL FAMILY UNIT MEMBERS	1,108
FAMILY MEMBERS PAYING HALF DUES	565